



CANADIAN PROCESS CONTROL ASSOCIATION



Canadian Fluid
Power Association

Association canadienne
d'énergie des fluides



2022 AGM, JUNE 8-11, WHISTLER, BC WESTIN RESORT & SPA

The beauty of this location has to be seen to be believed. With the COVID situation seeming to turn a corner, we can't wait to welcome everyone back!

For the first time ever, we will be co-locating the AGM with the Canadian Fluid Power Association (CFPA) and Canadian Process Control Association (CPCA), resulting in even better keynotes and greatly expanded networking opportunities. The meeting will cover a range of issues including keynotes from:

- Opening Keynote: David Allison, Valuegraphics
- Andrew Wynn-Williams, Divisional Vice-President, CME
- James Donaldson: CEO at BC Food & Beverage
- Dale Wheeldon, President and CEO: British Columbia Economic Development Association
- Stuart Ducoffe (B.C.L., LL.B., CHRL) founder of e2r™

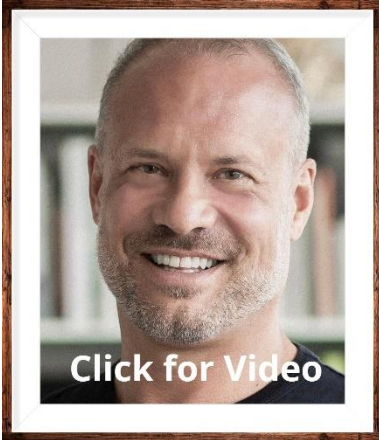
Social events include:

- Annual golf tournament at the Whistler Golf Club
- Spousal program including a spa event and lunch
- E-biking or Ziplining
- Mountain top networking reception and dinner



This is the perfect opportunity to form new relationships and gain industry insight.

[**REGISTER HERE**](#)



Opening Keynote: David Allison, Valuegraphics

“The Science of Influence: Breakthrough Data to Motivate Equipment Buyers”

What can behavioral science teach us about equipment buyers? David Allison is a best-selling author, international speaker and global expert on human behavior. He's just completed a transformational study on equipment buyers in the Food and Beverage Industry, specifically for the 2022 Annual General Meeting. His company has built the first global record of how humans make decisions, and he uses data from 750,000 surveys to help companies like PayPal, The United Nations Foundation and Lululemon understand how to motivate the people they want to reach. He will be sharing the game-changing insights with us for the very first time.

You will learn:

- why demographic ideas about your customers are misleading you
- how core human values are a far more powerful way to understand people
- exactly what will motivate your customers, and how to use the research findings to influence more people more often

This is the first time these behavioral science insights have ever been available. You really don't want to miss this.



Andrew Wynn-Williams, Divisional Vice-President, CME

“Trade & Investment in the Manufacturing Sector”

Trade and Investment in the Manufacturing Industry – What does economic analysis say about the BC Manufacturing sector and what does future hold? With the new North American Trade agreement and the easing of trade tensions between the US and China and lack of investment in technology remains our biggest concern for the future of the manufacturing industry.

Andrew is responsible for CME BC's strategic vision, managing relations with members and advocating on behalf of their interests. He is also responsible for liaison with government and other stakeholders such as the coalition of industry groups and other economic developers. In addition, he will lead teams to create new CME programs to bring additional value to members through advocacy, training and business development.



James Donaldson: CEO at BC Food & Beverage “Canada’s Supply Chain & Labour Challenges – Implications and Solutions”

- Impact of supply chain issues on the food industry
 - Will speak federally but will spend some time discussing the unique challenges of the BC Flood crisis on this province
- What to do about labour?
 - Current programs to address and their shortcomings
- Automation is a key long-term solution
- Investment in advanced manufacturing & automation especially needed for food
- Industry Trends – where is the industry headed?



Dale Wheeldon, President and CEO: British Columbia Economic Development Association, “Creating Provincial Strengths”

Wildfires, Floods, and Pandemics have impacted BC’s economy over the past several years. In addition, supply chain challenges, housing crisis, provincial and national debt, and more have created negative impacts. But not all impacts have been negative. How are BC communities adapting, and how is this opening new opportunities to strengthen the BC Economy to withstand future economic shocks. How are we adopting economic reconciliation, and what can we all do to create provincial strengths for the future. Through cooperation and acknowledging we have

weaknesses to address, we can have a positive future for all.

The BCEDA is the leading professional association of economic development practitioners in the Province of BC. BCEDA currently has over 420 members and provides services that help member communities grow and expand new and existing businesses, attract new business investments, and work towards strategic infrastructure investment, land use planning, and community enhancement.



McMaster Industry 4.0 Leadership Assessment Workshop

Program Lead for the Industry Operations Leadership & Management Program - Ashan Corea

With the advent of Industry 4.0, the Leadership 4.0 model has evolved to define a new type of leader needed to drive the next era of industry. As strategic leaders continue to have an increased workload in order to anticipate site or theater-level disruptions, the need for tactical-level leaders has evolved.

**Stuart Ducoffe (B.C.L., LL.B., CHRL) founder of e2r™
“The New World of Remote Work”**



The new world of remote work appears to be a workplace development that will be with us for many years to come. As with any new change certain unanticipated challenges become apparent and require consideration.

In the case of remote work two material considerations are: (i) the importance of establishing remote work policies and/or individualized agreements; and (ii) occupational health and safety and workers compensation implications.

With respect to (i), employers should be setting out the relevant terms applicable to the organization’s remote work protocol including the employer’s ability to make changes as well as reserving the discretion to discontinue the policy.

With respect to (ii), employers need to recognize that an employee’s remote work environment likely constitutes the “workplace” triggering a host of employer obligations including the obligation to take every precaution reasonable in the circumstances to protect the health and safety of workers which typically includes the requirement to conduct hazard assessments. Should injuries occur in the remote workplace, the organization may face claims for workers compensation and potentially even prosecution by the applicable provincial Ministries of Labour.

Business Meeting Structure

- Both organizations will enjoy the keynotes together but separate for individual business meetings, including updates on market insight, academic liaison and regulatory issues

Event Costs

Hotel: Deluxe Studio Suite:	\$229
One bedroom Suite:	\$269
Conference Registration:	\$975
Spousal Meal Package:	\$325
Spousal Spa Activity:	Based on service
Golf Tournament:	\$275

Sponsorship Opportunities

With senior delegates from both the Canadian Process Control Association and the Canadian Fluid Power Association, there are more reasons than ever to sponsor one of the many fantastic social and business components at the AGM.

[Click to learn more](#)

Agenda

WEDNESDAY JUNE 8

1:30	CPCA Board of Director's Meeting (Directors only), Crystal Conference Room
3:00	CFPA Board of Director's Meeting (Directors only) Crystal Conference Room
6:00	Opening Reception, Proceed to Gondola (get ticket from front desk), <i>Sponsored by e2r Solutions</i>
7:30	Group Dinner, Mountain Top

THURSDAY, JUNE 9

7:30	Breakfast for delegates in Emerald A
8:30	Members - Annual General Meeting, Emerald A Welcome & Introductions
8:45	Speaker 1: David Allison, Valuegraphics
10:15	Break
10:45	Speaker 2: Stuart Ducoffe (B.C.L., LL.B., CHRL)
12:00	Networking Lunch, <i>Sponsored by Applied</i>
1:15	Speaker 3: McMaster Leadership Workshop
2:00	Speaker 4: Dale Wheeldon: President and CEO: British Columbia Economic Development Association
3:00	Break
3:15	CPCA & CFPA Business Meetings (Members only)
5:45	Minute to Win It, Emerald A
7:00	Group Dinner, Grill & Vine Patio, Westin

SPOUSAL ACTIVITY: JUNE 9

10:00	Spa and Lunch
-------	---------------

FRIDAY, JUNE 10

7:30	Members and Spouses – Breakfast in Emerald A
8:30	Technical Sessions, Emerald A Speaker 5: James Donaldson, CEO BC Food & Bev
10:00	Break
10:15	Speaker 6: Andrew Wynn-Williams, Divisional Vice-President, CME
	Boxed lunches provided for golfers
1:00	Golf Tournament, Whistler Golf & Country Club
1:00	Alternate Activity for non-golfers: Ziplining or E-biking
6:30	Closing Dinner, Whistler Village

Social Program

- Golf Tournament
- Mountain Top Dinner
- Spousal events
- Ziplining or E-Biking



Accommodations: Westin Resort & Spa

4090 Whistler Way, Whistler, BC,
V8E 1J3



NOTES

1. Members will be responsible for paying for their own room accounts, taxes & incidentals.
2. This year hotel reservations will be done directly by delegates by [clicking this link](#).
3. Spouses are asked to contact the hotel directly to book spa appointments [at this link](#). The group lunch will begin at 1 in the Grill and Vine Restaurant at the Westin.
4. Due to the adult nature of the conference, children are not allowed to attend the group dinners or social activities.
5. The golf alternate program will be determined by popular vote. Option 1 is ziplining. Option 2 is e-biking.
6. **Note: due to the ever-changing pandemic some aspects of the program may change prior to the event. It has made events challenging.**

AGM Event Sponsors

CPCA would like to thank the sponsors that make this fantastic event even more amazing!



[Click for a list of sponsorship opportunities.](#)

