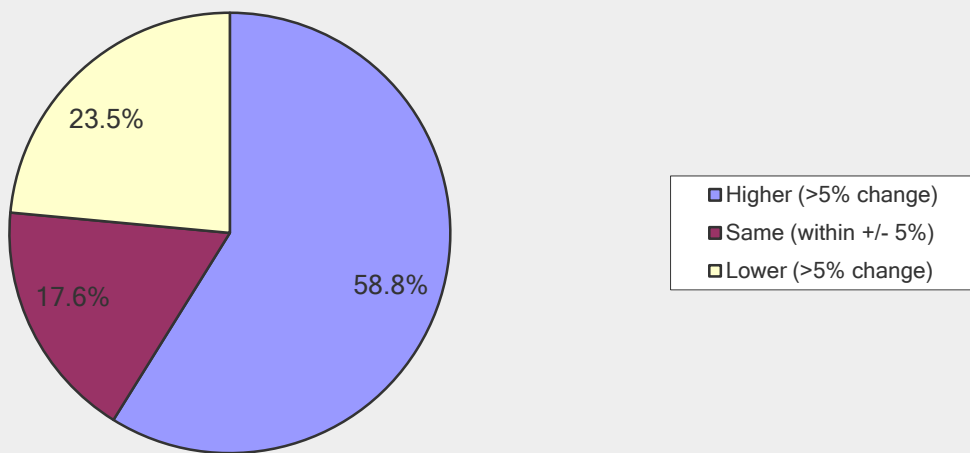


CEO's Business Conditions Report Q4, 2014

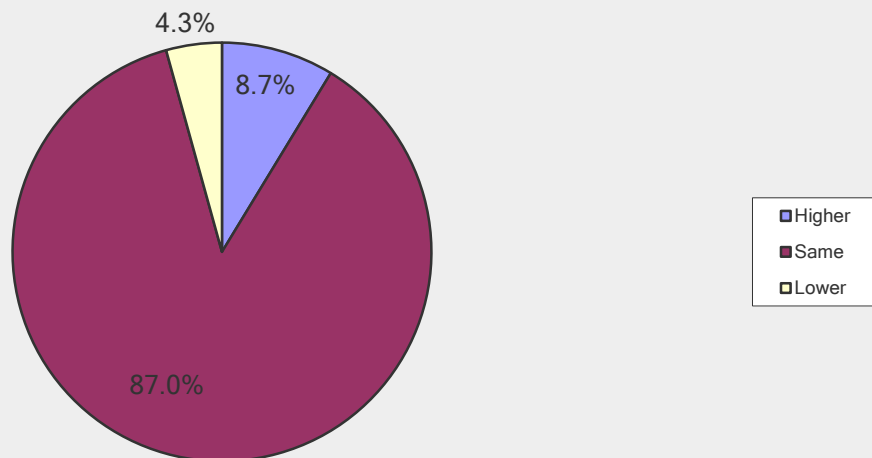
The daily rate of shipments for Q4, 2014 (by dollar volume, not units) compared to Q3 2014:

Answer Options	Response Percent	Response Count
Higher (>5% change)	58.8%	10
Same (within +/- 5%)	17.6%	3
Lower (>5% change)	23.5%	4
<i>answered question</i>		17

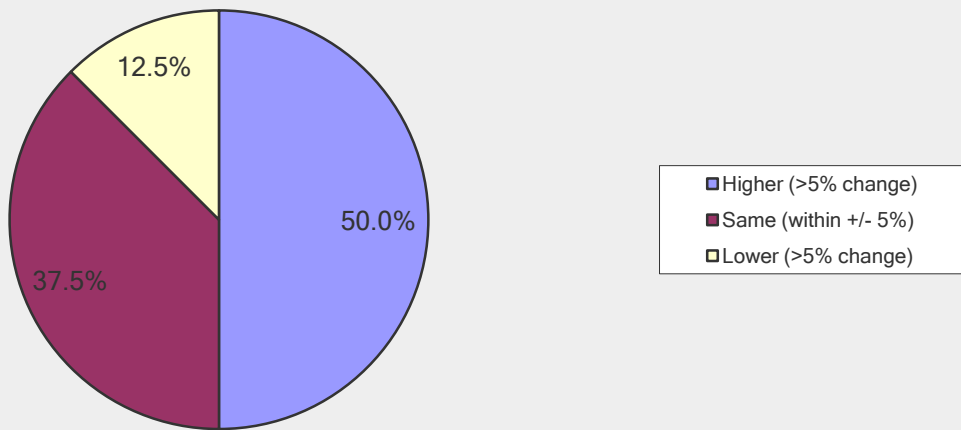
The daily rate of shipments for Q4, 2014 (by dollar volume, not units) compared to Q3 2014:



In Q2, 2014 compared with Q1, 2014, production hours for hourly employees were:



The daily rate of shipments for Q3, 2014 (by dollar volume, not units) compared to Q2 2014:



In Q1, 2014 compared with Q4, 2013, production hours for hourly employees were:

